

gogoldfields
Central Victoria



**An opportunity to
invest in community
driven change**



Contents

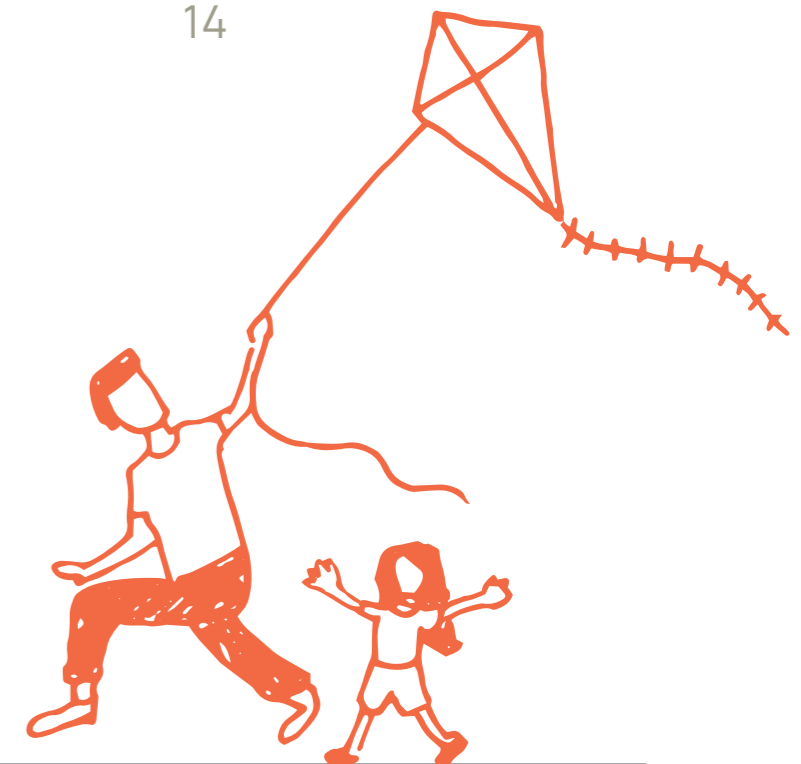
Introduction	04
Our Ask	05
Our approach	06
Every Child, Every Chance	08
Enabling the Change	09
Driving Impact	10
The early results are promising	11
The Nest	12
The challenge	13
How you can help	13
Contact us	14



Acknowledgement of Country

We acknowledge the Dja Dja Wurrung as the traditional owners of the lands on which we work and collaborate. We offer our respects to their elders past and present. We recognise their ongoing connection to the land and waters that was never ceded.

We commit to working in solidarity and partnership with Aboriginal and Torres Strait Islander people to enable self-determination and increase our capacity to nurture a culturally safe community.



Introduction



Go Goldfields is underscored by the vision of our community aspiring, achieving and being able to live a full life.

Central Goldfields stands at a crossroads. As the region grapples with significant and entrenched socioeconomic disadvantage, high poverty rates, unemployment, and intergenerational trauma. In this challenging environment, Go Goldfields is leading efforts to progress community empowerment, enhance resilience, and build local capacity.

Go Goldfields is driven by a vision of a thriving community where everyone aspires and achieves a full life. Central Goldfields faces entrenched socioeconomic challenges such as poverty, unemployment, and intergenerational trauma. In response, Go Goldfields is empowering the community, building resilience, and enhancing local capacity. The "Every Child, Every Chance" initiative improves access to services, promotes inclusive engagement, and offers parenting programs and community-led support.

This initiative takes a systems approach, combining evidence-based programs with community engagement to ensure children in Central Goldfields have the best chance to thrive. However, no ongoing funding threatens the progress made and the momentum built.

Key Issues

Economic and social disadvantage:

Highest rate of poverty in Victoria with disproportionate levels of poor health, family stress, substance abuse, and mental health issues.

Service gaps and accessibility:

Significant gaps services. Geographic isolation and poor public transport further limit access.

Community trust and engagement:

Trust in institutions is low, compounded by limited social capital and fragmented service delivery.



Our ask

Despite numerous successes, our ability to make a lasting difference is at risk due to a lack of ongoing funding. To embed the principles of Go Goldfields and Every Child, Every Chance in the long term and truly impact the families of Central Goldfields, we need critical financial support. This support will help us maintain our backbone functions and deepen the impact of the Every Child, Every Chance initiative.

With your backing, we can continue our vital work and support the community's journey towards enduring change, ensuring that every child in Central Goldfields has every chance to thrive. In the following pages, we will demonstrate how change can continue to positively impact lives.



Our approach



Go Goldfields adopts a whole-of-community approach to enable long-term change.

We boast a Leadership Table of key regional decision makers and community leaders and passionate, capable backbone support. We leverage strategic opportunities to drive systemic change, with your support we can continue to deliver:



- **Advocacy and policy change:** Engage with policymakers to address systemic barriers and advocate for place-based solutions for our community.
- **Drive collaboration around a shared vision:** Build and strengthen partnerships with local organisations, service providers, and government entities to improve service coordination and nurture collaboration.
- **Community engagement and co-design:** Increase community engagement to build trust, and design services and supports with community to suit their needs.
- **Demonstrate innovation:** Adopt and trial creative new ways to address complex issues facing the community.
- **Resource mobilisation:** Explore innovative funding opportunities and corporate philanthropic partnerships to secure financial resources to sustaining and expanding our programs.

We are dedicated to disrupting the cycle of disadvantage and building a foundation for lasting change and through our collective impact.

We work to create amplify and connect program investments, catalyse practice change, and lead collaboration through a shared vision.



Every Child, Every Chance

Change happens when we create a better opportunities for children and their families.

Go Goldfields established the Every Child, Every Chance initiative in 2020. The initiative is focused improving outcomes for children aged 0 to 8 and their families to ensure every child in Central Goldfields have every chance to grow up healthy, safe, and confident.

Stacking interventions through five evidence-based priority areas, we are determined to make a positive change to the lives of children, particularly those living with disadvantage, across Central Goldfields.

Confident and Connected Parents

All parents and carers are empowered, resourced, and supported to confidently parent. They can connect socially and with services where they are invited to design and influence the delivery of programs and services that impact their lives and family.



Valued Early Years Education and Care

Governments, services and our community invest in early childhood education and care to empower and support families and the workforce to create opportunity and growth in the community.



Healthy and Supported Pregnancies

Every pregnancy in Central Goldfields is supported to maximise choice, opportunity, and the health and well-being of parent and child.



Safe and Thriving Children

All children are raised in psychologically, physically, emotionally, and culturally safe environments that listen and respond to them appropriately, enabling them to thrive and meet their potential.



A Great Start to School for all Kids

Services, schools and kindergartens work collaboratively to support children and their families to ensure everyone is ready to get the most out of their foundation education.



Enabling the Change



The Go Goldfields backbone is enabling change through:

- Delivering The Nest and innovative evidence based, community responsive programs such as 'Being a Parent'.
- Providing advocacy for children and families to ensure services and support are available to meet their needs.
- Providing a critical anchor in the community for services and governments to meet children and families where they are at.
- Collecting research, data & community voice to drive collaborative work
- Mapping and aligning interventions to maximise their value to our community
- Supporting working partnerships around the five priority areas
- Developing an outcomes framework ready for comprehensive evaluation
- Building stronger systems for ongoing monitoring.



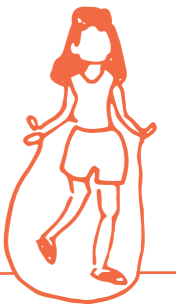
Driving Impact



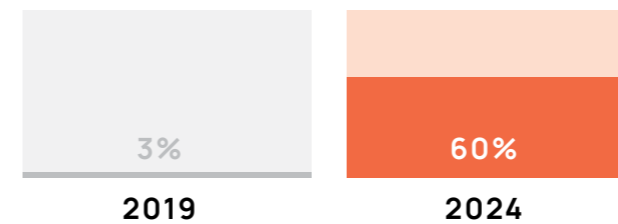
The Every Child, Every Chance initiative has made a significant impact increasing coordination and access to services, developing programs and spaces responsive to community need, and leading collaboration for better outcomes for children and families.

- The foundation of a seamless and supportive local early years system to support better access, support and outcomes for Central Goldfields children and their families.
- Strong buy-in from all key institutions and services to the Every Child, Every Chance initiative and vision.
- A new safe and welcoming facilitated drop in parenting space and anchor point for related visiting services Central Maryborough – known as 'the Nest'.
- A whole of shire approach to transition from kinder to school that places the child and family at the centre.
- Implementation of a peer to peer parenting program with trained local facilitators and supervisors.

The early results are promising



Increased participation of 15 hours of kinder from 33% in 2019 to 85% in 2024.



Engagement in first-time parent programs has risen from 3% in 2019 to 60% in 2024.

2200 family visits to **The Nest** **1300+** referrals

More than 2200 family visits to The Nest drop-in sessions since July 2022, with more than 1300 referrals to additional supports and services.

Working in partnership with services and programs including:

Loddon Child Health and Wellbeing Local
Maryborough District Health Service
Maternity Services

Central Goldfields Shire Council Maternal and Child Health

MDHS Sexual and Reproductive Advice Clinic

Supported Playgroups

Centre Against Sexual Assault

Orange Door

Anglicare Family Services

Loddon Campaspe Community
Legal Services

Australian Breastfeeding Association

Access to Early Learning program

Early Help program

Centralised Kinder Registration

Our wonderful local schools, kinders and early learning centres.

The Nest



- The Nest is a safe and welcoming space for local parents and carers in central Maryborough.
- Open for drop-in sessions from Monday to Friday the Nest offers access to a full time facilitator help navigate local services, programs, activities and nurture social connection.
- Programs include: First Time Parents group, Being a Parent peer to peer program, Welcome to Kindergarten, First Aid for parents, Baby play group, Toddler time, and Child-birth education classes.
- The Nest also provides a safe and familiar space for visiting practitioners to meet with families with adjoining consult rooms.
- Hosting a regular networking forum, and professional development events to strengthen relationships throughout the system, the Nest serves as an anchor for early years professionals working with local children and families.



The challenge



Despite our successes, entrenched socio-economic disadvantage, and its effects on our children, will take generations to overcome.

Go Goldfields has developed a promising foundation for change through the Every Child Every Chance initiative BUT the model needs ongoing financial support to maintain momentum and achieve the change.

How you can help

We are in critical need of long term financial support to maintain our backbone function and deepen the impact of the Every Child, Every Chance initiative.

With your support, we can continue our work in this community's journey of long-term change, ensuring every child in Central Goldfields has every chance to thrive.

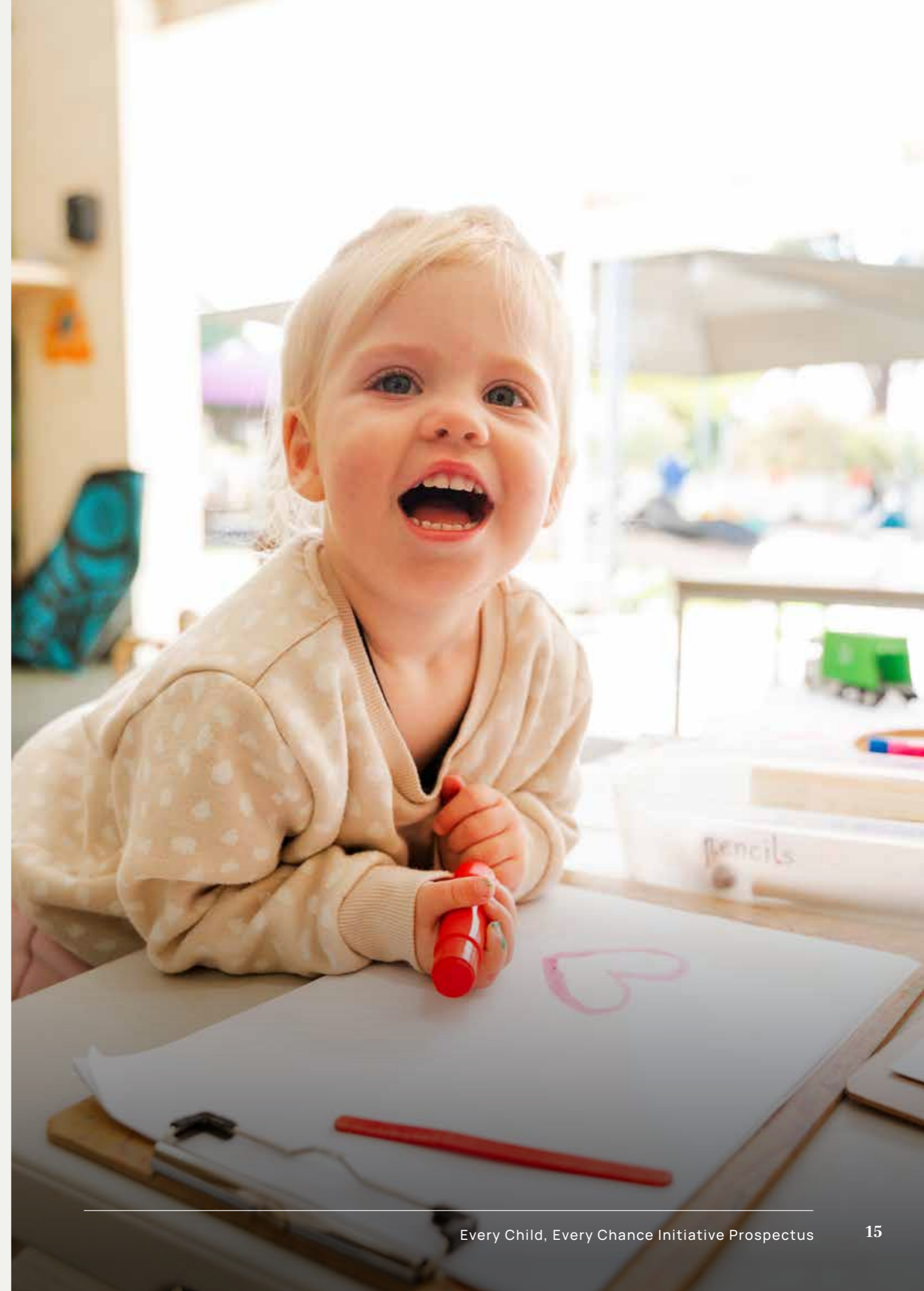
Contact us



For more information or to support our initiative, please contact us at:

www.gogoldfields.org

Join us in making a lasting difference in the lives of children and families in Central Goldfields. Together, we can ensure every child has every chance to be healthy, safe, and confident.





Contact us
www.gogoldfields.org
(03) 5461 0610

